



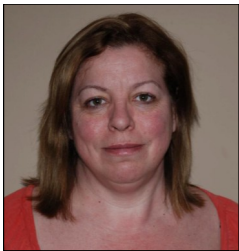
**Archway**  
NETWORK PRINTING SOLUTIONS

Case  
Study

dmp

## Dexter Montague Find the Perfect Solution for High Volume, High Quality Printing & Copying

Dexter Montague are a leading firm of Solicitors in the Thames Valley. The wide range of legal services they offer individual clients, businesses and other organisations means the office support team are kept very busy. This includes the photocopying and printing element of their company systems. Particularly in the conveyancing team, the ability to deal with high print volumes and being able to produce high quality documents fast is a vital.



When Helen Glanville, Practice Accountant at Dexter Montague was tasked with sourcing a new colour copier quality was the main priority. Working for a law firm Helen has a keen eye for detail and overpriced or inferior solutions were quickly discounted. In the end Helen selected the Canon IR C2380i colour photocopier from a National Company to be Dexter Montague's new colour copying solution. After 2 years of estimated and prepaid meter readings and poor service she felt it was time to try something different from a local company.

**Helen explains why she chose Archway,** 'Archway offered the whole package. A good price and a quality solution. The fact they are local is a big plus because if there is a problem we need someone to be there to sort it out as quickly as possible.'

### Archway's Solution

Archway has taken on Dexter Montague's present solution and has upgraded it by linking it to the office network, allowing every computer to scan documents and print. This machine is ideal for high volume applications and produces quality colour documents fast. Archway provides network servicing and maintenance as a package which means the risk of down time or drops in print quality are minimised.

#### Key Features

- **Fast, colour copying**
- **High quality print**
- **High volume printing**
- **Easy document scanning**
- **Local servicing and support**

### New Print Solution Supports Quality Service to Clients

The new Archway printing and copying solution enables the support team at Dexter Montague to provide fast efficient turnaround on important documents day in day out. This means partners dealing with large case loads are well supported and aren't impacted by outdated or inferior printing and copying infrastructure.

**Helen says** 'Our partners are very happy because it is important to them to have the documents they need fast. It is also vital that the documents are professional looking and reflect the quality of the services we provide at Dexter Montague.'

**Call Archway today to find your perfect print and copy solution.**

**Tel: 01183 240 135 Email: [sales@archwaybusiness.com](mailto:sales@archwaybusiness.com)**